

MCS Pass

MAHLE Cyber Security access
to authenticated diagnostics



| TAB | OP | CARROZZA | CHASSI | AUXILIARI |
|-------------|----|---------------------------------|--------|-------------------------------|
| Carrozzeria | ✓ | Cassa instrumenti ✓ | ABS ✓ | Luci anteriori ✓ |
| Chassis | ✓ | Sistema condotti ✓ | ABS ✓ | Parallelogramma elettronico ✓ |
| Motori | ✓ | Sistema iniezione elettronica ✓ | ✓ | ✓ |

Contents

1. User guide for MCS Pass

| | | |
|-----|-----------------------------|----|
| 1.1 | Description MCS Pass | 07 |
| 1.2 | Account registration | 08 |
| 1.3 | Identity verification | 10 |
| 1.4 | Video pages description | 14 |
| 1.5 | List of supported documents | 16 |
| 1.6 | Diagnosis session | 17 |

1. User guide for MCS Pass

1.1

Description MCS Pass

MCS Pass is a standard way of registering for auto repair users who intend to operate on vehicles protected by cyber security.

It is a one-time procedure for each user and it applies to all brands involved by cyber security (current and future).

It is aligned with the requirements of the Manufacturers with whom MAHLE has signed agreements for cyber security access.

Registration involves entering little data directly on the diagnosis terminal, and is completed through a user identity verification process provided in collaboration with an external partner (IDnow).

The user receives instructions via email regarding the identity verification procedure.

The user's identity verification can be carried out by smartphone (Android, iOS) or PC/Laptop with camera.

Once the identity verification is completed, within a few hours, the user gets his/her account MCS Pass.

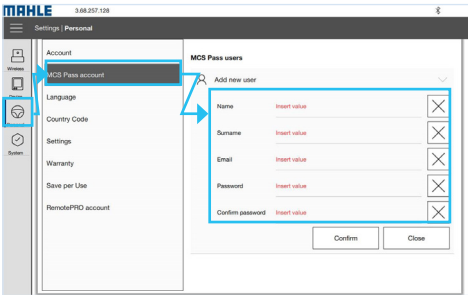
In the case of a vehicle with cyber security, the auto repair user having an account MCS Pass, will have to enter the personal password before unlocking the vehicle.

1.2 Account registration

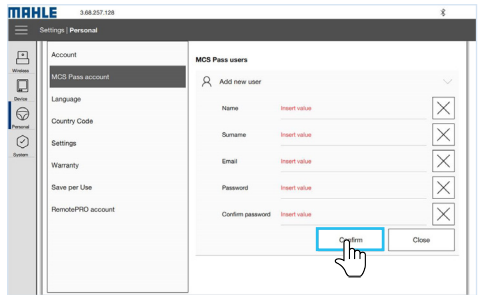
Creating account on terminal

- 1 Enter on terminal of the diagnosis application, in the "Menu | Settings | Personal | Account section MCS Pass", the data required for creating the account
- 2 Click on CONFIRM
- 3 Accept the terms and conditions to continue
- 4 Complete the identity verification process by following the instructions received via email

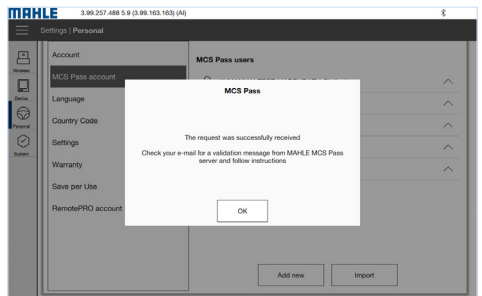
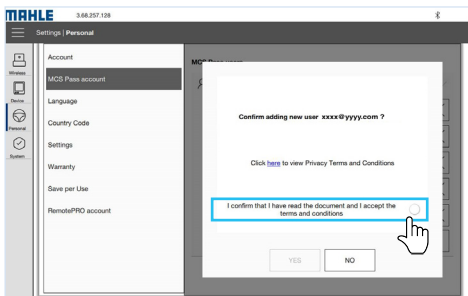
1



2



3



4

Da: MAHLE AFTERMARKET <ib@mahle.com>
 Oggetto: MCS Pass Program - Identity Verification Request
 Data: 1 febbraio 2023, 16:54:39 CET
 A:

The MCS Pass program requires you to verify your identity, through a service provided by our partner **iKnow**.
 The assigned identification token is: **SMP-WZORG**
 Please choose one of the available options to complete the identity verification process:
 Website: <https://go.iknow.de/SMP-WZORG>
 Mobile APP:



Make sure you are in a properly lit place, prepare for a selfie, and show your ID.

1.3 Identity verification

There are two possible ways for identification, which are described below.

Identification via Android / iOS smartphone

Identification via Android / iOS smartphone

- 1 Select the SMARTPHONE AND TABLET icon
- 2 Install the IDnow application on your smartphone and open it
- 3 Enter your assigned identification token (Ident-ID) and click on START to begin identification
- 4 Accept the terms and conditions and click BEGIN IDENTIFICATION
- 5 Allow access to photos and videos on your smartphone
- 6 Upload your ID document as requested in the application

- 7 Proceed with facial recognition by taking a photo of your face
- 8 Wait for the result to be verified
- 9 Once the procedure is complete, it displays the message VERIFICATION DATA SUCCESSFULLY SUBMITTED

1

Simple, safe and practical.
MCS Pass for your identification.

MAHLE

1. Personal Information → 2. Identification → 3. Result

2 Identification
which device would you like to use?

Smartphones and Tablets
Use our Free App on your smartphone, Android, iOS and Amazon.

Web Browser
Use a browser on your computer. No extra software is required.

1 Install the IDnow App with the link sent by SMS

The SMS for installing the IDnow App will be sent to this mobile phone number

Send installation SMS

2

MAHLE

To verify your identity

You can use the webmobile version
by using your mobile phone you have a better chance of successfully completing the identification process.

Scan the QR code using your device to get ready to start right away

Ident-ID SFZ.MNKJA

You can also continue in our desktop browser experience here

3

IDnow.

Please enter your Ident-ID to start

PMF-HRNPT

Start

4

Terms & Conditions

I have read the IDnow Privacy Policy and accept the IDnow Terms of Service

Privacy Policy
Terms of Service

Start Identification

I do not agree

6

ID front

Position your ID in front of the camera in the indicated zone

Ok, I am ready

7

Selfie

Take a Selfie

Keep your face in the frame, look directly into the camera, and do not smile

Ok, I am ready

8

Verifying results

Please wait while we confirm that your data has been successfully sent and received.

9

Verification data submitted successfully

Ident-ID
PMF-HRNPT

Thank you for using our online identity verification service!

Identification via PC

Identification via PC

- 1 Select the COMPUTER AND WEBCAM icon
- 2 Check the required entries and click on START IDENTIFICATION
- 3 Select the highlighted item and proceed
- 4 Accept the terms and click OK, I AM READY

- 5 Upload your ID document as requested in the application
- 6 Proceed with facial recognition by taking a photo of your face
- 7 Once the procedure is complete, it displays the message IDENTIFICATION COMPLETED SUCCESSFULLY

1

Simple, safe and practical.
MCS Pass for your identification.

MAHLE

1. Personal Information 2. Identification 3. Result

2 Identification
which device would you like to use?

Smartphones and Tablets
Use our Mahle App on your mobile device.
Available for iOS and Android.

Computers and Webcams
Use a browser on your computer. No extra software is required.

If you have a webcam and a recent browser, you don't have to download nor install anything. All you have to do is start and your identification will be completed in just a few minutes. Your data: Ident-ID SFZ.MNKJA

Other things we need to know:

I have my phone with me and my mobile phone number is correct.
My mobile phone number:

During the procedure we will send your Ident code by SMS to this number:

I own a working webcam and I explicitly consent to the entire process being recorded, including images of my person and my ID.
Not sure? Alternatively, you can use our [SmartPass App](#) to identify yourself.

I have my ID at hand.
During the identification procedure we will check your ID document. *Which ID documents are accepted?*

I accept Mahle's terms and conditions and have read the privacy policy. *Which ID documents are accepted?*

Start Identification

2

Simple, safe and practical.
MCS Pass for your identification.

MAHLE

1. Personal Information 2. Identification 3. Result

2 Identification
which device would you like to use?

Smartphones and Tablets
Use our Mahle App on your mobile device.
Available for iOS and Android.

Computers and Webcams
Use a browser on your computer. No extra software is required.

If you have a webcam and a recent browser, you don't have to download nor install anything. All you have to do is start and your identification will be completed in just a few minutes. Your data: Ident-ID SFZ.MNKJA

Other things we need to know:

I have my phone with me and my mobile phone number is correct.
My mobile phone number:

During the procedure we will send your Ident code by SMS to this number:

I own a working webcam and I explicitly consent to the entire process being recorded, including images of my person and my ID.
Not sure? Alternatively, you can use our [SmartPass App](#) to identify yourself.

I have my ID at hand.
During the identification procedure we will check your ID document. *Which ID documents are accepted?*

I accept Mahle's terms and conditions and have read the privacy policy. *Which ID documents are accepted?*

Start Identification

3


MAHLE

To verify your identity

You can use the webmobile version

by using your mobile phone you have a better chance of successfully completing the identification process.

Scan the QR code using your device to get ready to start right away



Ident-ID:

You can also continue in our [desktop browser experience here](#)

4

MAHLE

Before we begin

Have your ID ready



Be prepared to take a selfie



6

MAHLE



The identification was successfully completed

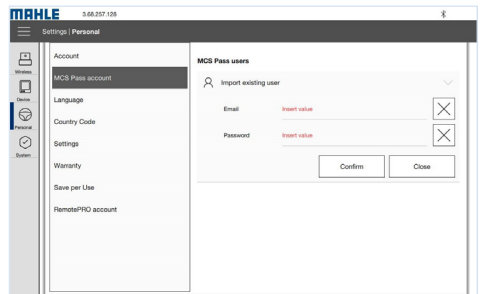
Thank you! You have successfully completed your identification.
You will be contacted by MAHLE Aftermarket shortly

1.4

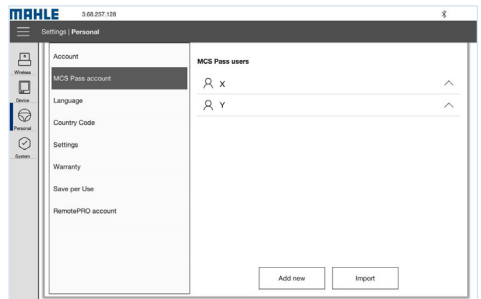
Video pages description

Import users

Imports to that tool user(s) previously registered

**User list**

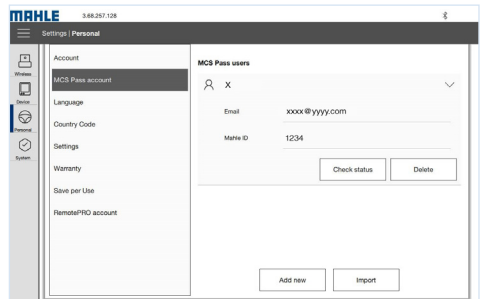
Allows you to view the list of users, add new users, import already registered users (e.g. when changing PCs), view the details (see "User details")



User details

In this section you can view user details (email and Mahle ID), check registration status or delete the user

Note: user deletion occurs only locally. Registration is not deleted

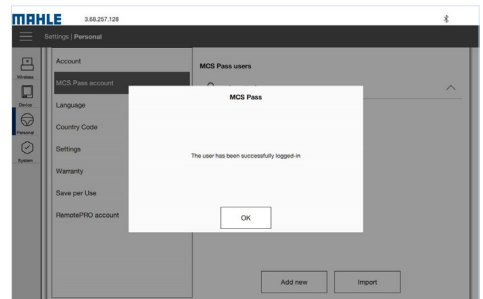


User status check

It displays the status of the request. Possible statuses are:

- Non-existent user
- Pending approval
- New document requested or document expired
- Registration rejected

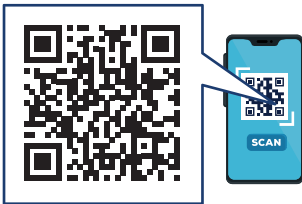
Note: In case of rejected registration or incorrectly entered documentation, please contact the technical support



1.5

List of supported documents

To view the list of supported documents, access the link given in the QR code:



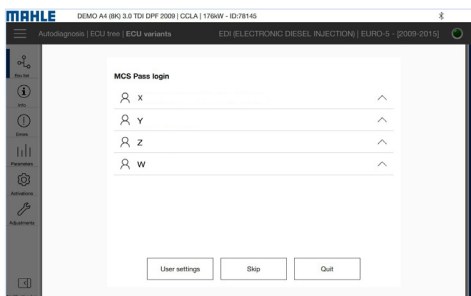
1.6 Diagnosis session

When accessing Cyber Security-protected vehicle, a drop-down menu pop-up appears asking to select the user MCS Pass from those previously enabled, and enter the associated password.

Diagnosis session

- 1 Select the user from those previously included
- 2 Enter the password associated with the selected user
- 3 Select CONFIRM to access

1



2

